

# Mi-T-M<sup>®</sup> CORPORATION

8650 Enterprise Drive, Peosta IA 52068

563-556-7484 / Fax 563-556-1235

[www.mitm.com](http://www.mitm.com)

## PARTS LIST FOR

***CD-1002-0MUH (AFTER SERIAL #10146810)***

***CD-1002-0MUC (AFTER SERIAL #10146810)***

***CD-1502-0MUC (AFTER SERIAL #10040369)***

***CD-1502-0MUH***

### MOTOR HORSEPOWER:

CD-1002-0MUH/C: 1.5 HP

CD-1502-0MUH/C: 2.0 HP

### PUMP OIL GRADE:

Mi-T-M PUMP OIL #AW-4085-0016

### PUMP OIL CAPACITY:

11.2 oz.

### NOZZLE SIZE:

CD-1002-0MUH/C: 1.40 mm

CD-1502-0MUH/C: 1.25 mm

This Parts Listing has been compiled for your benefit. You can be assured your Mi-T-M Cold Water Pressure Washer was constructed and designed with quality and performance in mind using over 25 years experience in the pressure washer business. Each component has been rigorously tested to insure the highest level of acceptance.

The contents of this Parts Listing are based on the latest product information available at the time of publication. Mi-T-M reserves the right to make changes in price, color, materials, equipment, specifications or models at any time without notice.

**WARNING**

THIS IS A PROFESSIONAL HIGH PRESSURE, COLD WATER PRESSURE WASHER. CAUTION SHOULD BE OBSERVED WHEN USING OR REPAIRING THIS UNIT! READ AND FOLLOW THE SAFETY WARNINGS LISTED BELOW BEFORE ATTEMPTING ANY REPAIRS ON THIS PRESSURE WASHER!

**SAFETY WARNINGS**

1. NEVER alter or modify the equipment. Be sure any accessory items and system components being used will withstand the pressure developed. Use only genuine Mi-T-M parts for repair of your pressure washer. Failure to do so can cause hazardous operating conditions and will VOID warranty.
2. NEVER make adjustments on machinery while the unit is connected to the power source. Turning over the machinery by hand during adjustment or cleaning might start the machinery, causing serious injury to the operator.
3. Know how to stop and bleed pressures quickly. Be thoroughly familiar with controls.
4. Before servicing the unit, turn unit off, relieve the water pressure and allow the unit to cool down. Do not make repairs while the unit is running. Service in a clean, dry, flat area.
5. After testing the machine, DO NOT leave the pressurized unit unattended. Shut off the unit and release trapped pressure before leaving.

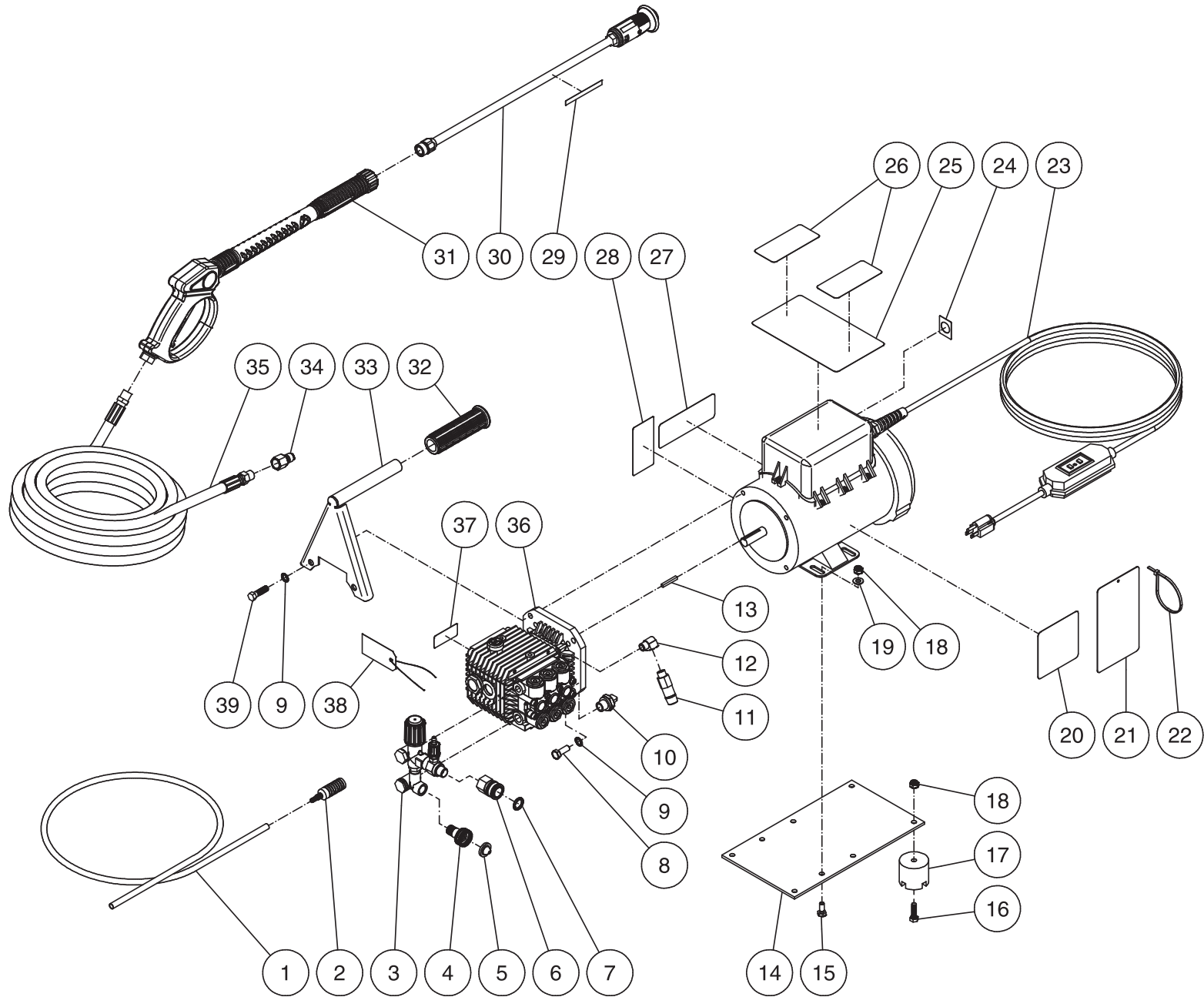
**Table of Contents**

<b>SPECIFICATIONS</b> .....	<b>3</b>
<b>FRAME ASSEMBLY FOR CD-1002-0MUH (AFTER SERIAL #10146810) &amp; CD-1502-0MUH</b> .....	<b>4</b>
<b>FRAME ASSEMBLY FOR CD-1002-0MUC (AFTER SERIAL #10146810) &amp; CD-1502-0MUC (AFTER SERIAL #10040369)</b> .....	<b>6</b>
<b>MOTOR ASSEMBLY (851-0247 &amp; 851-0248)</b> .....	<b>8</b>
<b>PUMP ASSEMBLY (3-0071)</b> .....	<b>10</b>
<b>UNLOADER (8-0493) &amp; DETERGENT INJECTOR (46-0752) ASSEMBLY</b> .....	<b>12</b>
<b>GUN ASSEMBLY (16-0167)</b> .....	<b>14</b>
<b>GUN ASSEMBLY (16-0404)</b> .....	<b>16</b>
<b>LANCE ASSEMBLY (16-0171)</b> .....	<b>18</b>
<b>LANCE ASSEMBLY (16-0413)</b> .....	<b>20</b>
<b>OPTIONAL CART ASSEMBLY (AW-7005-02WK)</b> .....	<b>22</b>
<b>WIRING SCHEMATIC</b> .....	<b>24</b>
<b>WIRING DIAGRAM</b> .....	<b>25</b>

## SPECIFICATIONS

MODEL NUMBER	CD-1002-0MUH	CD-1002-0MUC	CD-1502-0MUH	CD-1502-0MUC
<b>Operating Pressure (PSI/Bar):</b>	1000/69		1500/103	
<b>High Pressure Nozzle:</b>	1.40 mm		1.25 mm	
<b>Water Volume (GPM/lpm):</b>	2.0/7.6			
<b>Motor:</b>	Totally enclosed fan cooled, circuit breaker thermal overload protection, 35ft. power supply cord with Ground Fault Circuit Interrupter (GFCI)			
Horsepower	1.5		2.0	
Voltage	120			
Phase	Single			
Amps	12.5		17.0	
<b>Pump:</b>	Direct Driven, Oil Bath, Triplex Piston			
Oil Type	Mi-T-M Pump Oil #AW-4085-0016			
Oil Capacity (oz./liters)	11.2/0.3			
Plungers	Ceramic			
Manifold	Forged Brass			
Valves	Stainless Steel			
Unloader	Preset			
Pop-Off Valve	Relieves excess pressure			
Heat Dump Valve	Relieves heated water during unloader bypass stage			
<b>Detergent Injector:</b>	Adjustable low pressure down stream from pump			
<b>Unit Net Weight (lbs/Kg)</b>	53/24	100/50	53/24	100/50
<b>Unit Shipping Weight (lbs/Kg)</b>	65/29.5	115/52	65/29.5	115/52
<b>Unit Net Dimension (in)</b>	22Lx11Wx14.5H	32Lx18Wx22.5H	22Lx11Wx14.5H	32Lx18Wx22.5H
<b>Unit Net Dimension (cm)</b>	56Lx28Wx37H	81Lx45.75Wx57H	56Lx28Wx37H	81Lx45.75Wx57H
<b>Unit Shipping Dimension (in)</b>	24.5Lx13Wx16H	33Lx21Wx24H	24.5Lx13Wx16H	33Lx21Wx24H
<b>Unit Shipping Dimension (cm)</b>	62Lx33Wx40.5H	84Lx53Wx61H	62Lx33Wx40.5H	84Lx53Wx61H

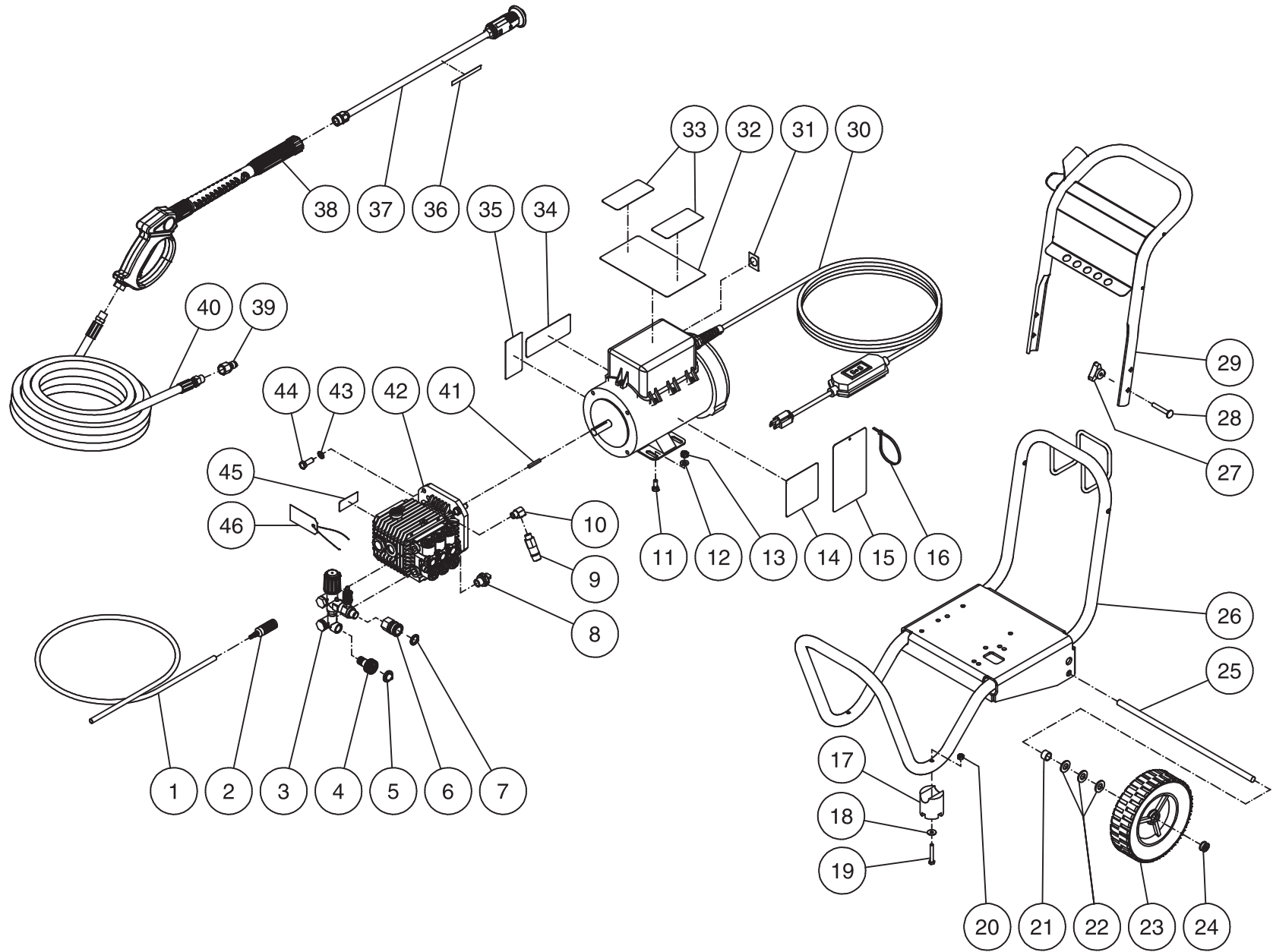
FRAME ASSEMBLY FOR CD-1002-0MUH (AFTER SERIAL #10146810) & CD-1502-0MUH



CD-1002\_1502-0MUH-012605-JJF

FRAME ASSEMBLY FOR CD-1002-0MUH (AFTER SERIAL #10146810) & CD-1502-0MUH								
REF. #	DESCRIPTION	PART #	QTY.		REF. #	DESCRIPTION	PART #	QTY.
1	Detergent Hose *(Four Feet Required)	15-0021	1		23	Motor Assembly- 1.5 HP (CD-1002-0MUH)	851-0247	1
2	Detergent Strainer	19-0050	1		-	Motor Assembly- 2.0 HP (CD-1502-0MUH)	851-0248	1
3	Unloader	8-0493	1		24	Decal- On/Off (See 34-9015)	N/A Sep.	1
4	Garden Hose Fitting	23-0096	1		25	Decal- Warning: Risk of Electrocutation (See 34-9015)	N/A Sep.	1
5	Inlet Filter	19-0001	1		26	Decal- Mi-T-M CD-1002 (CD-1002-0MUH)	34-0629	2
6	Quick Connect Socket	17-0004	1		-	Decal- Mi-T-M CD-1502 (CD-1502-0MUH)	34-0630	2
7	O-ring (Replacement Only)	25-0123	-		27	Decal- Warning: Risk of Injection/Explosion (See 34-9015)	N/A Sep.	1
8	Bolt	27-0117	4		28	Decal- Date Plate	N/A	1
9	Lockwasher	29-0155	4		29	Decal- Adjustable Nozzle (See 34-9015)	N/A Sep.	1
10	Thermal Relief Valve	22-0114	1		30	Lance w/Variable Nozzle 1.40mm (CD-1002-0MUH)	16-0413	1
11	Pop-Off Valve	22-0046	1		-	Variable Nozzle Assembly- 1.25mm (CD-1502-0MUH)	16-0171	1
12	Elbow	23-0014	1		31	Gun w/Lance (CD-1002-0MUH)	16-0404	1
13	Key	43-0072	1		-	Gun w/Lance (CD-1502-0MUC)	16-0167	1
14	Baseplate	5-0110A01	1		32	Handle Grip	7-0059	1
15	Bolt	27-0066	4		33	Handle Assembly	7-0078A01	1
16	Bolt	27-0068	4		34	Quick Connect Plug	17-0006	1
17	Isolator	14-0008	4		35	High Pressure Hose	15-0138	1
18	Locknut	30-0157	4		36	Pump	3-0071	1
19	Washer	28-0003	4		37	Decal- Important Pump Instructions (See 34-9015)	N/A Sep.	1
20	Decal- Caution/Important (See 34-9015)	N/A Sep.	1		38	Tag- Remove Red Plug	34-0102	1
21	Hang Tag- Warning: Risk of Electrocutation (E/F/S)	34-1035	1		39	Bolt	27-0118	2
22	Cable Tie	33-0022	1			Safety Decal Kit (Inc. 20, 24-25, 27, 29, 37)	34-9015	
*Must Order in One Foot Lengths								

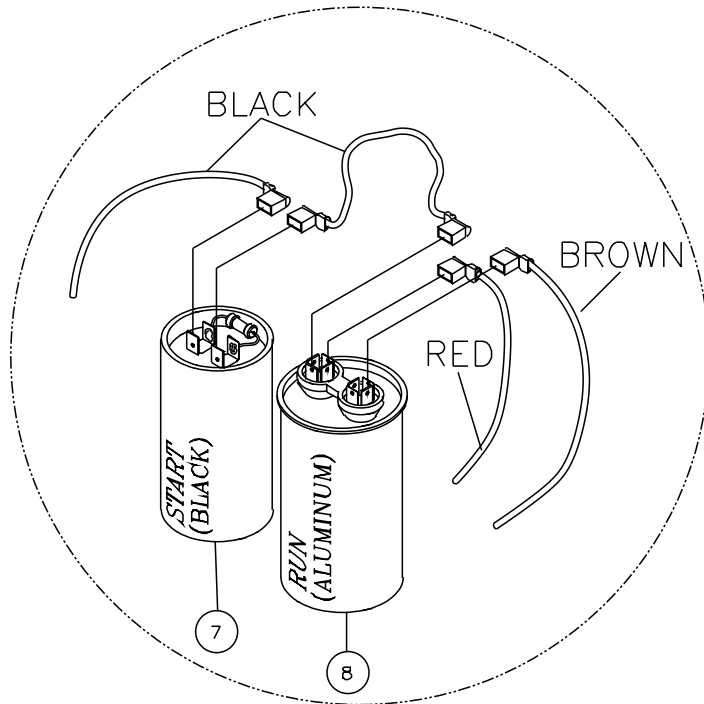
FRAME ASSEMBLY FOR CD-1002-0MUC (AFTER SERIAL #10146810) & CD-1502-0MUC (AFTER SERIAL #10040369)



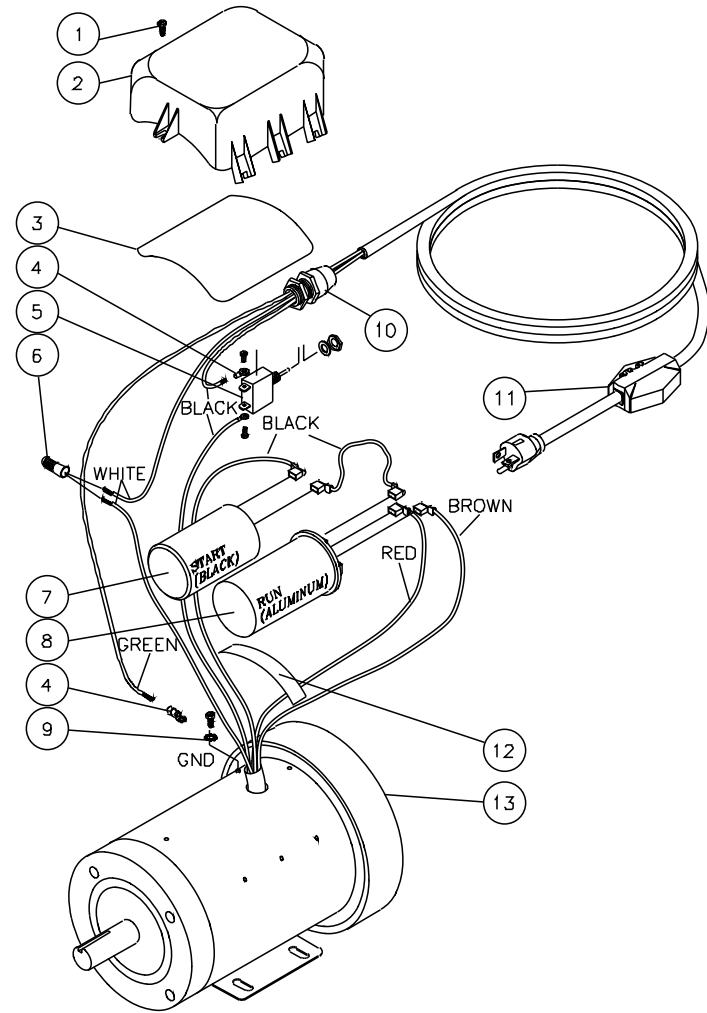
CD-1002\_1502-0MUC-012605-JJF

FRAME ASSEMBLY FOR CD-1002-0MUC (AFTER SERIAL #10146810) & CD-1502-0MUC (AFTER SERIAL #10040369)							
REF. #	DESCRIPTION	PART #	QTY.	REF. #	DESCRIPTION	PART #	QTY.
1	Detergent Hose *(Four Feet Required)	15-0021	1	27	Knob	7-0107	2
2	Detergent Strainer	19-0050	1	28	Bolt	31-0051	2
3	Unloader	8-0493	1	29	Handle Assembly	7-0158A01	1
4	Garden Hose Fitting	23-0096	1	30	Motor Assembly- 1.5 HP (CD-1002-0MUC)	851-0247	1
5	Inlet Filter	19-0001	1	-	Motor Assembly- 2.0 HP (CD-1502-0MUC)	851-0248	1
6	Quick Connect Socket	17-0004	1	31	Decal- On/Off (See 34-9015)	N/A Sep.	1
7	O-ring (Replacement Only)	25-0123	-	32	Decal- Warning: Risk of Electrocution (See 34-9015)	N/A Sep.	1
8	Thermal Relief Valve	22-0114	1	33	Decal- Mi-T-M CD-1002 (CD-1002-0MUC)	34-0629	2
9	Pop-Off Valve	22-0046	1	-	Decal- Mi-T-M CD-1502 (CD-1502-0MUC)	34-0630	2
10	Elbow	23-0014	1	34	Decal- Warning: Risk of Injection/Explosion (See 34-9015)	N/A Sep.	1
11	Bolt	27-0066	4	35	Decal- Date Plate	N/A	1
12	Washer	28-0003	4	36	Decal- Adjustable Nozzle (See 34-9015)	N/A Sep.	1
13	Locknut	30-0157	4	37	Lance w/Variable Nozzle 1.40mm (CD-1002-0MUC)	16-0413	1
14	Decal- Caution/Important (See 34-9015)	N/A Sep.	1	-	Variable Nozzle Assembly- 1.25mm (CD-1502-0MUC)	16-0171	1
15	Hang Tag- Warning: Risk of Electrocution (E/F/S)	34-1035	1	38	Gun w/Lance (CD-1002-0MUC)	16-0404	1
16	Cable Tie	33-0022	1	-	Gun w/Lance (CD-1502-0MUC)	16-0167	1
17	Isolator	14-0066	2	39	Quick Connect Plug	17-0006	1
18	Washer	28-0021	2	40	High Pressure Hose	15-0138	1
19	Bolt	27-0019	2	41	Key	43-0072	1
20	Locknut	30-0155	2	42	Pump	3-0071	1
21	Axle Spacer	20-0406A01	2	43	Lockwasher	29-0115	4
22	Washer	28-0006	5	44	Bolt	27-0117	4
23	Wheel	14-0052	2	45	Decal- Important Pump Instructions (See 34-9015)	N/A Sep.	1
24	Hub Cap	33-0055	2	46	Tag- Remove Red Plug	34-0102	1
25	Axle	20-0517	1		Safety Decal Kit (Inc. 14, 31, 32, 34, 36, 45)	34-9015	
26	Frame	5-0148A01	1	*Must Order in One Foot Lengths			

# MOTOR ASSEMBLY (851-0247 & 851-0248)



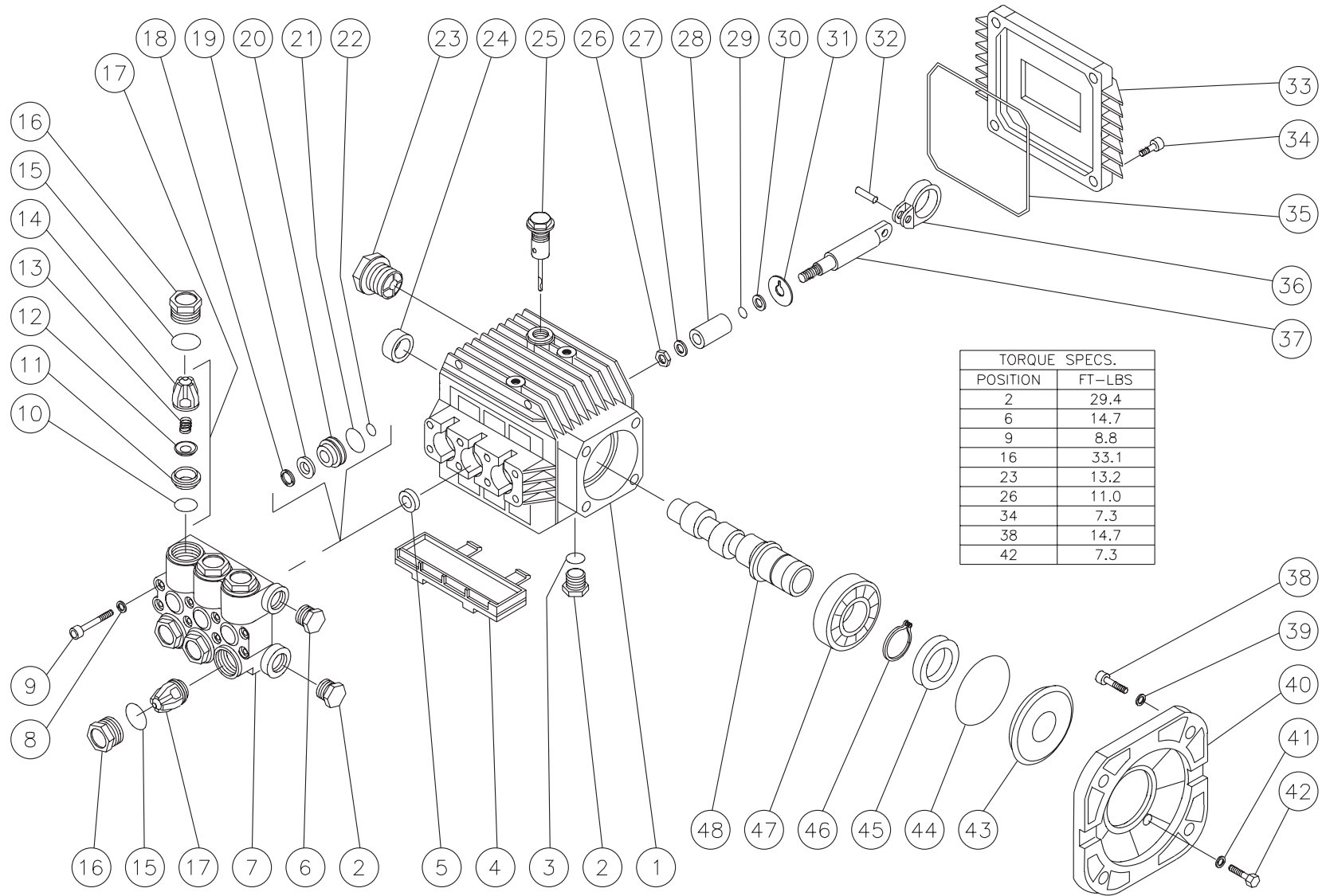
CAPACITOR TERMINAL ASSEMBLY





<b>MOTOR ASSEMBLY (851-0247 &amp; 851-0248)</b>			
<b>REF. #</b>	<b>DESCRIPTION</b>	<b>PART #</b>	<b>QTY.</b>
1	Hex Screw	27-8389	8
2	Motor Box	52-0041	1
3	O-ring	25-0338	1
4	Terminal	32-0099	2
5	Switch for 851-0247 (15 Amp)	32-0408	1
-	Switch for 851-0248 (20 Amp)	32-0348	1
6	Crimp Splice	32-0359	1
7	Starting Capacitor for 851-0247	32-0411	1
-	Starting Capacitor for 851-0248	32-0412	1
8	Running Capacitor	32-0413	1
9	Lockwasher	28-1009	1
10	Strain Relief	32-0407	1
11	GFCI Cord for 851-0247 (15 Amp)	32-0268	1
-	GFCI Cord for 851-0248 (20 Amp)	32-0215	1
12	Motor Box Strap	52-0042	1
13	Motor- 1.5 H.P. (See 851-0247)	N/A Sep.	1
-	Motor- 2.0 H.P. (See 851-0248)	N/A Sep.	1
	Complete Motor Assembly (Inc. 1-13)	851-0247	
	Complete Motor Assembly (Inc. 1-13)	851-0248	

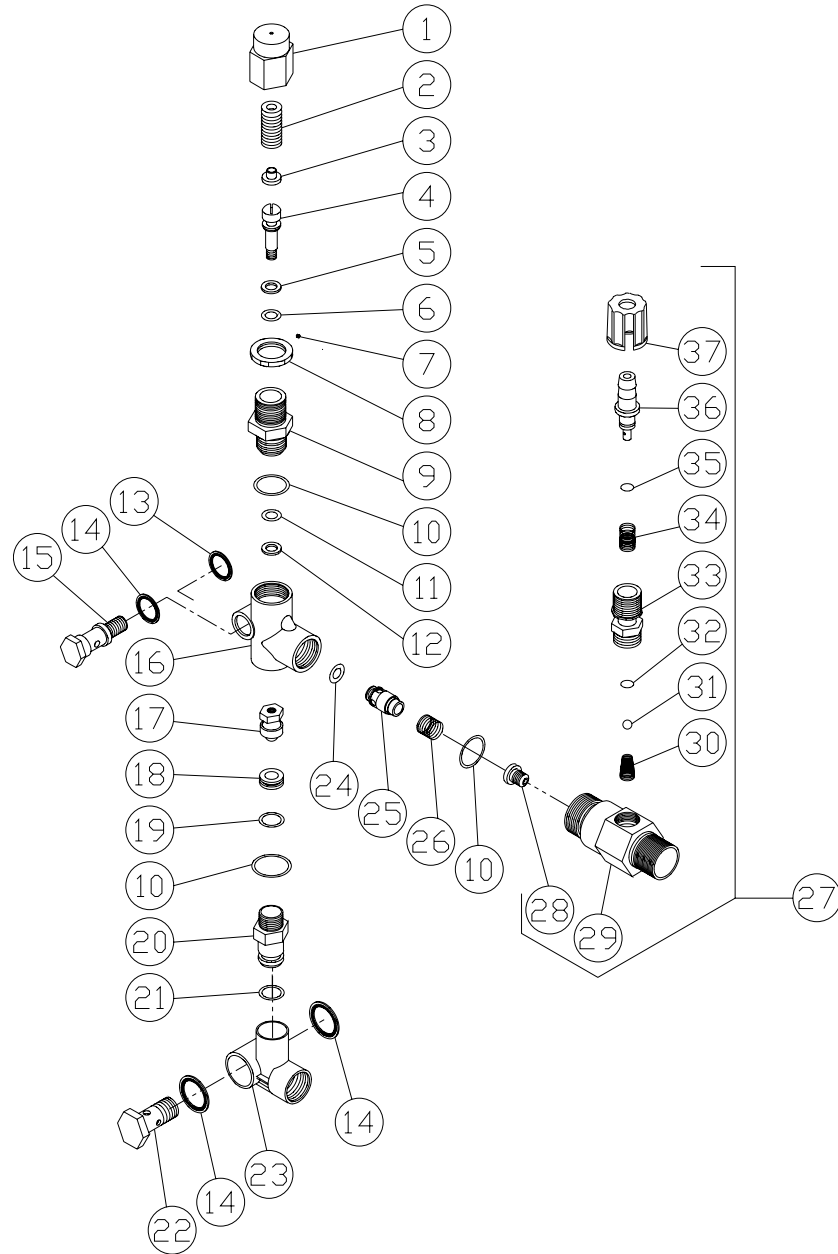
# PUMP ASSEMBLY (3-0071)



3-0071-060104-KZ

PUMP ASSEMBLY (3-0071)							
REF. #	DESCRIPTION	PART #	QTY.	REF. #	DESCRIPTION	PART #	QTY.
1	Crankcase	46-0221	1	27	Washer	46-0166	3
2	Plug	39-0018	2	28	Plunger- Ceramic	46-0148	3
3	O-ring	25-0052	1	29	O-ring	25-0045	3
4	Drip Pan	46-0229	1	30	Back-up Ring	25-0143	3
5	Oil Seal	26-0111	3	31	Washer	46-0167	3
6	Plug	39-0017	1	32	Conecting Rod	43-0044	3
7	Manifold- Brass	46-0163	1	33	Crankcase Cover	46-0151	1
8	Lockwasher	29-0153	12	34	Bolt	27-8409	4
9	Bolt	27-8406	8	35	Cover O-ring	25-0332	1
10	O-ring (See 70-0009)	N/A Sep.	6	36	Connecting Rod	46-0152	3
11	Valve Seat (See 70-0009)	N/A Sep.	6	37	Piston Guide	46-0149	3
12	Valve Plate (See 70-0009)	N/A Sep.	6	38	Bolt	27-0117	4
13	Valve Spring (See 70-0009)	N/A Sep.	6	39	Lockwasher	29-0155	4
14	Valve Cage (See 70-0009)	N/A Sep.	6	40	Flange	38-0032	1
15	O-ring	25-0012	6	41	Lockwasher	29-0153	4
16	Valve Plug	39-0035	6	42	Bolt	27-8409	4
17	Valve Assembly (Includes 10-14) (See 70-0009)	N/A Sep.	6	43	Bearing Spacer	46-0087	1
18	Head Ring (See 70-0024)	N/A Sep.	3	44	O-ring	25-0060	1
19	V-packing (See 70-0024)	N/A Sep.	3	45	Oil Seal	26-0126	1
20	V-packing Retainer	46-0158	3	46	Snap Ring	46-0245	1
21	O-ring	25-0141	3	47	Ball Bearing	48-0024	1
22	O-ring	25-0128	3	48	Crankshaft	46-0277	1
23	Oil Level Indicator	46-0114	1		Valve Kit (Includes 3 each 10-14, 17)	70-0009	
24	Bearing	48-0019	1		V-packing Kit (Includes 3 each 18-19, 21-22)	70-0024	
25	Oil Dip Stick	46-0143	1		V-packing Assembly (Includes 18-22)	70-0023	
26	Nut	46-0168	3				

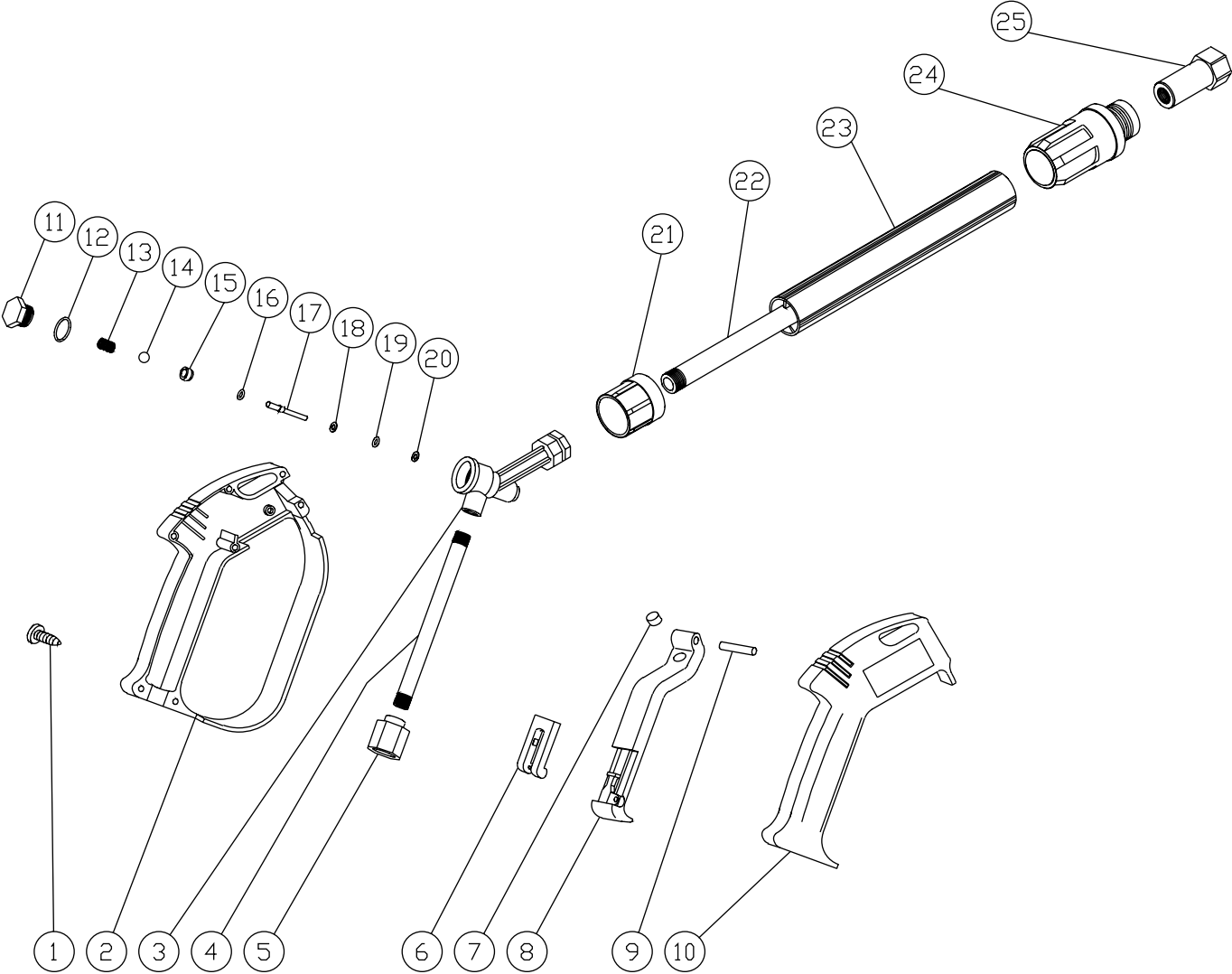
# UNLOADER (8-0493) & DETERGENT INJECTOR (46-0752) ASSEMBLY



8-0493-102600-RD

UNLOADER (8-0493) & DETERGENT INJECTOR (46-0752) ASSEMBLY								
REF. #	DESCRIPTION	PART #	QTY.		REF. #	DESCRIPTION	PART #	QTY.
1	Adjusting Cap	39-0092	1		21	O-ring	25-0376	1
2	Spring	49-0120	1		22	Connector	23-0285	1
3	Spring Retainer	8-0421	1		23	Bypass Fitting	N/A	1
4	Piston Stem	46-0324	1		24	O-ring	25-0375	1
5	Back-up Ring	25-0206	1		25	Flow Balancer	8-0426	1
6	O-ring (See 70-0168)	N/A Sep.	1		26	Spring	49-0121	1
7	Set Screw	8-0479	1		27	Detergent Injector- 1.80mm	46-0752	1
8	Locknut	46-0651	1		28	Orifice- 1.80mm	50-0146	1
9	Piston Retainer	8-0424	1		29	Injector Body	N/A	1
10	O-ring (See 70-0168)	N/A Sep.	3		30	Spring (See 852-0056)	N/A Sep.	1
11	O-ring (See 70-0168)	N/A Sep.	1		31	Ball (See 852-0056)	N/A Sep.	1
12	Back-up Ring	25-0203	1		32	O-ring (See 852-0056)	N/A Sep.	1
13	Washer	8-0433	1		33	Piston Retainer	N/A	1
14	Washer	8-0427	3		34	Spring	49-0056	1
15	Connector	23-0286	1		35	O-ring (See 852-0056)	N/A Sep.	1
16	Body	N/A	1		36	Barb	50-0157	1
17	Valve and Ball Assembly	46-0320	1		37	Adjustable Knob	50-0158	1
18	Bypass Seat	8-0430	1			Unloader Repair Kit (Inc. 4-6, 10-12, 17-19, 21)	70-0168	
19	O-ring	25-0202	1			Injector Repair Kit (Inc. 30-32, 35)	852-0056	
20	Bypass Fitting	N/A	1					

# GUN ASSEMBLY (16-0167)

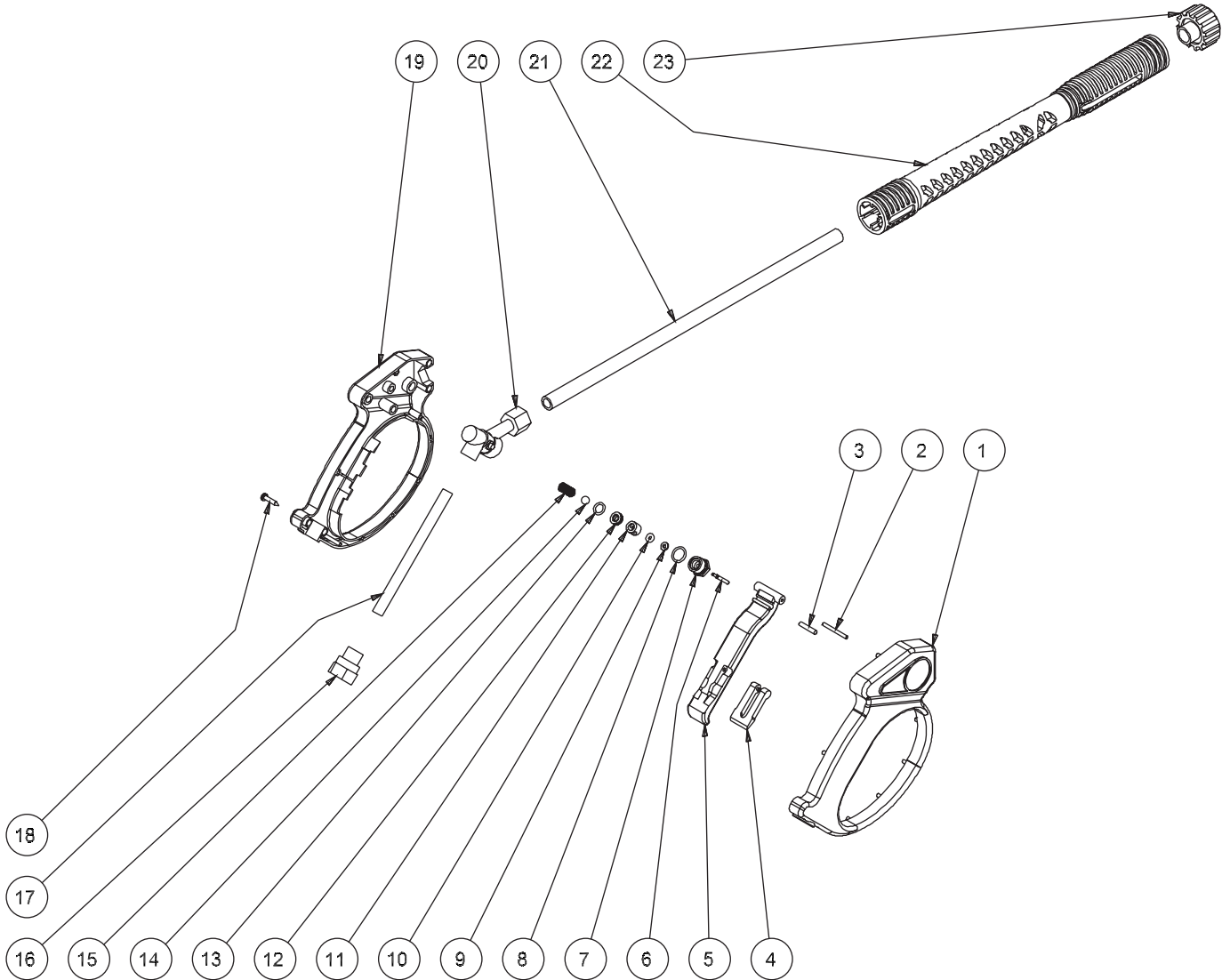


16-0167-110399-RD

## GUN ASSEMBLY (16-0167)

REF. #	DESCRIPTION	PART #	QTY.	REF. #	DESCRIPTION	PART #	QTY.
1	Screw	27-8382	7	15	Seat (See 70-0057)	N/A Sep.	1
2	Plastic Housing- Left Side	16-0336	1	16	O-ring (See 70-0057)	N/A Sep.	1
3	Housing	23-0295	1	17	Pin (See 70-0057)	N/A Sep.	1
4	Pipe	21-0095	1	18	Washer (See 70-0057)	N/A Sep.	1
5	Coupler	23-0174	1	19	O-ring (See 70-0057)	N/A Sep.	1
6	Trigger Safety Lock	16-0332	1	20	Back-up Ring (See 70-0057)	N/A Sep.	1
7	Trigger Rest	16-0333	1	21	Gun/Wand Connector	16-0182	1
8	Trigger	16-0335	1	22	Pipe	21-0089	1
9	Trigger Pin	43-0069	1	23	Wand Protector	62-0063	1
10	Plastic Housing- Right Side	16-0334	1	24	Plastic Screw Connector	16-0181	1
11	Plug (See 70-0057)	N/A Sep.	1	25	Quick Connect	17-0031	1
12	O-ring (See 70-0057)	N/A Sep.	1		Gun Kit (Includes 11-20)	70-0057	
13	Spring (See 70-0057)	N/A Sep.	1		Complete Gun Assembly (Inc. 1-25)	16-0167	
14	Ball (See 70-0057)	N/A Sep.	1				

# GUN ASSEMBLY (16-0404)



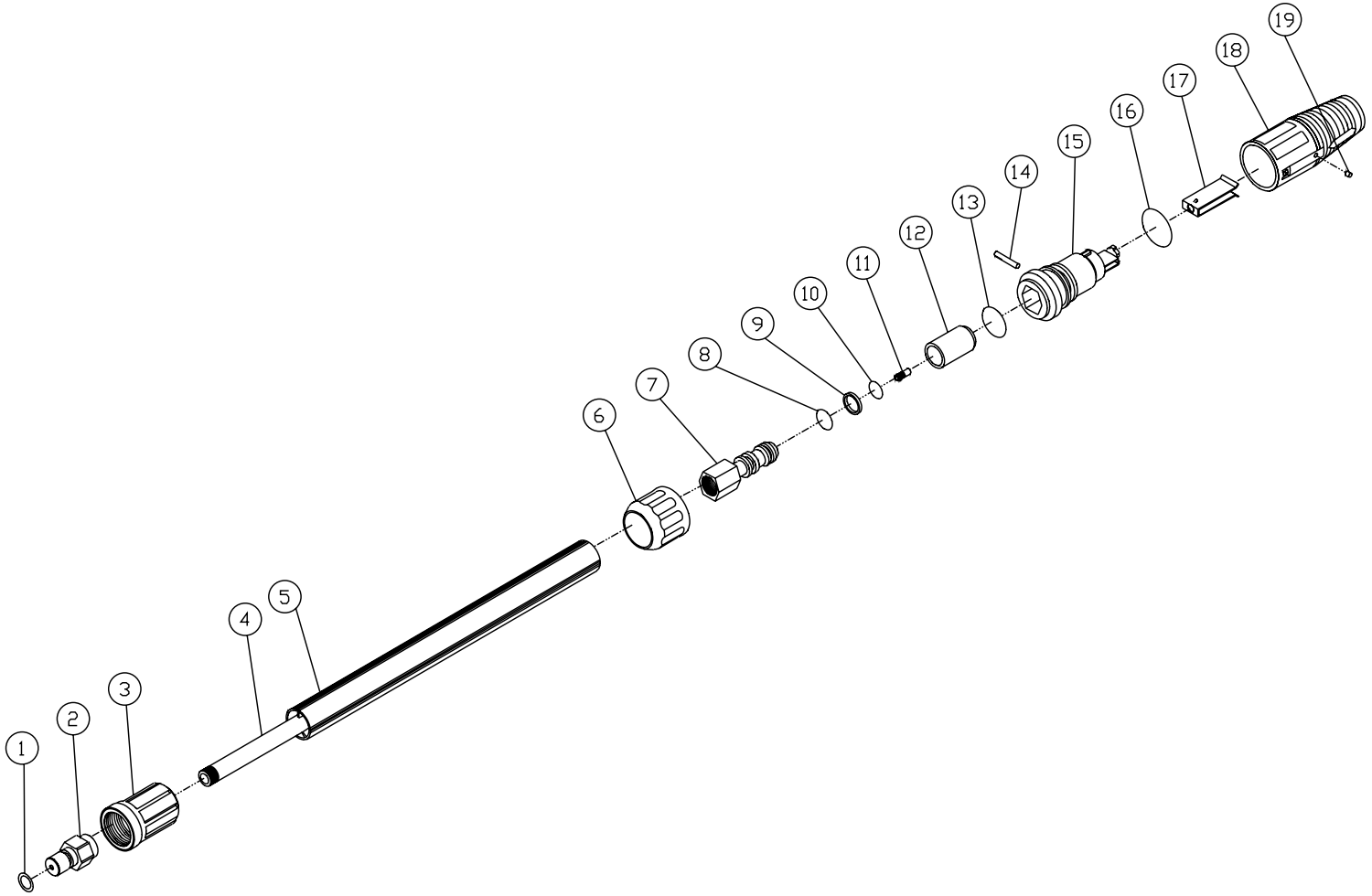
16-0404-111004-JJF



## GUN/LANCE ASSEMBLY (16-0404)

REF. #	DESCRIPTION	PART #	QTY.	REF. #	DESCRIPTION	PART #	QTY.
1	Gun Body (Right Side)	16-0405	1	13	O-ring (See 70-0375)	N/A Sep.	1
2	Pin	43-0114	1	14	Ball (See 70-0375)	N/A Sep.	1
3	Pin	43-0115	1	15	Spring Ball (See 70-0375)	N/A Sep.	1
4	Trigger Lock	16-0406	1	16	Female Inlet	23-0384	1
5	Trigger	16-0407	1	17	Pipe	16-0408	1
6	Pin (See 70-0375)	N/A Sep.	1	18	Screw	27-8862	6
7	Plug	23-0434	1	19	Gun Body (Left Side)	16-0409	1
8	O-ring	N/A	1	20	Body	23-0436	1
9	Backup Ring (See 70-0375)	N/A Sep.	1	21	Pipe	16-0410	1
10	O-ring (See 70-0375)	N/A Sep.	1	22	External Body	16-0411	1
11	Plug	23-0435	1	23	Screw Connect Coupling	16-0337	1
12	Seat (See 70-0375)	N/A Sep.	1		Gun Repair Kit (Inc. 6, 7, 9, 10, 12-15)	70-0375	

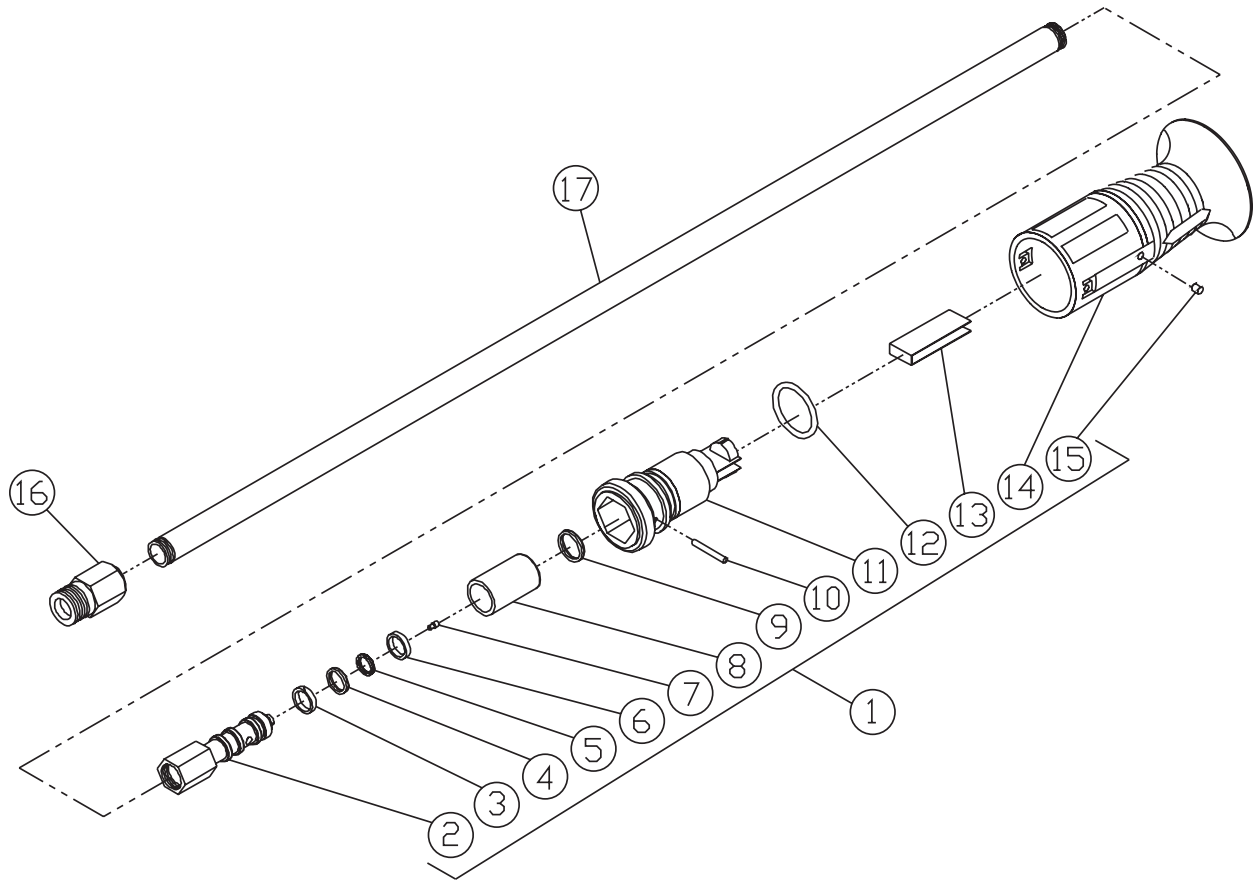
LANCE ASSEMBLY (16-0171)



16-0171-040500-RD

<b>LANCE ASSEMBLY (16-0171)</b>			
<b>REF. #</b>	<b>DESCRIPTION</b>	<b>PART #</b>	<b>QTY.</b>
1	O-ring	25-0259	1
2	Quick Connect	17-0032	1
3	Screw Connector	16-0183	1
4	Pipe	21-0096	1
5	Wand Protector	62-0092	1
6	Collar	16-0326	1
7	Nozzle Body	18-0300	1
8	O-ring	25-0345	1
9	Back-up Ring	25-0344	1
10	O-ring	25-0343	1
11	Nozzle- 1.25mm	18-0223	1
12	Sleeve	N/A	1
13	O-ring	25-0419	1
14	Nozzle Assembly Pin	43-0083	1
15	Housing	N/A	1
16	O-ring	25-0342	1
17	Nozzle Angle Plate	18-0283	1
18	Nozzle Protector	18-0301	1
19	Identification Pin- 1.25mm	18-0287	1

LANCE ASSEMBLY (16-0413)

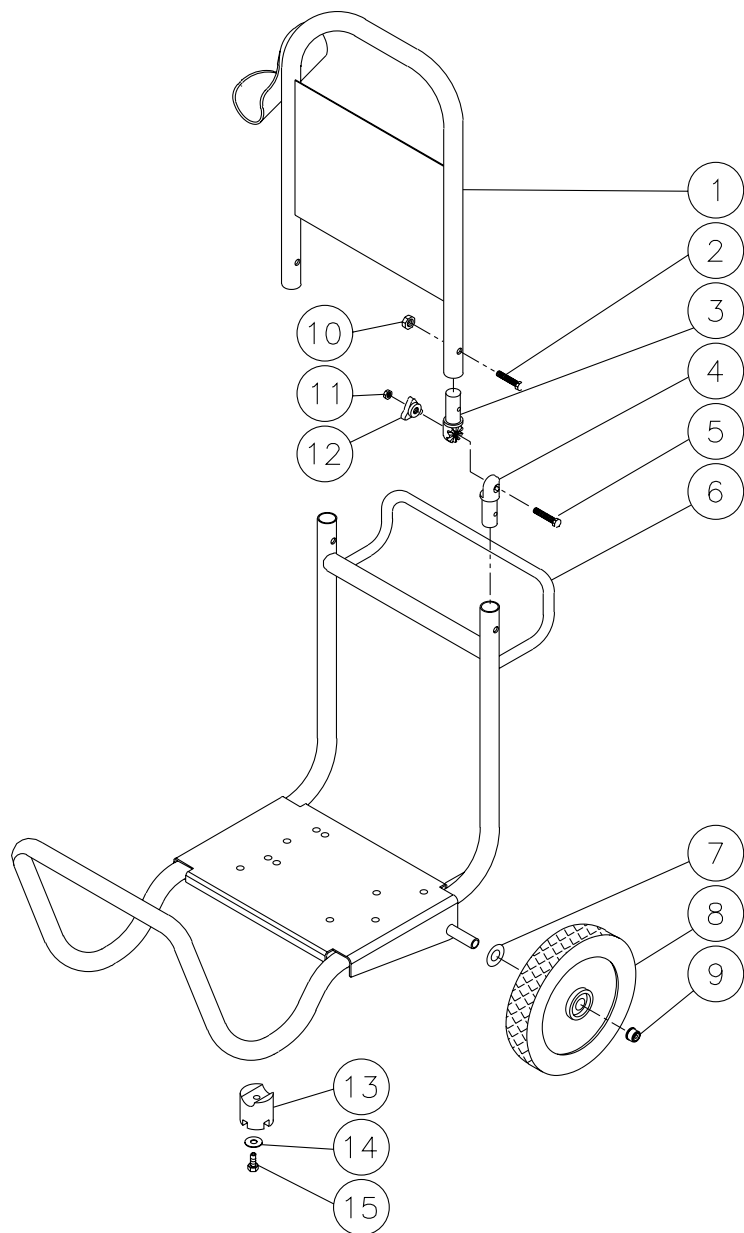


16-0381-081103-DLG

**LANCE ASSEMBLY (16-0413)**

REF. #	DESCRIPTION	PART #	QTY.	REF. #	DESCRIPTION	PART #	QTY.
1	Nozzle Assembly (Inc. 2-15)	18-0274	1	11	Plastic Housing (See 18-0274)	N/A Sep.	1
2	Nozzle Body	18-0284	1	12	O-ring	25-0342	1
3	Back-up Ring	25-0346	1	13	Angle Plate	18-0283	1
4	O-ring	25-0345	1	14	Nozzle Protector	18-0353	1
5	O-ring	25-0343	1	15	I.D. Pin- 1.40mm	18-0290	1
6	Back-up Ring	25-0344	1	16	Coupling	16-0378	1
7	Nozzle- 1.40mm	16-0173	1	17	Pipe	16-0379	1
8	Sleeve (See 18-0274)	N/A Sep.	1		Repair Kit (Inc. 4-6, 13)	70-0303	
9	O-ring	25-0419	1		Complete Lance Assembly (Inc. 1-17)	16-0413	
10	Pin	43-0083	1				

# OPTIONAL CART ASSEMBLY (AW-7005-02WK)

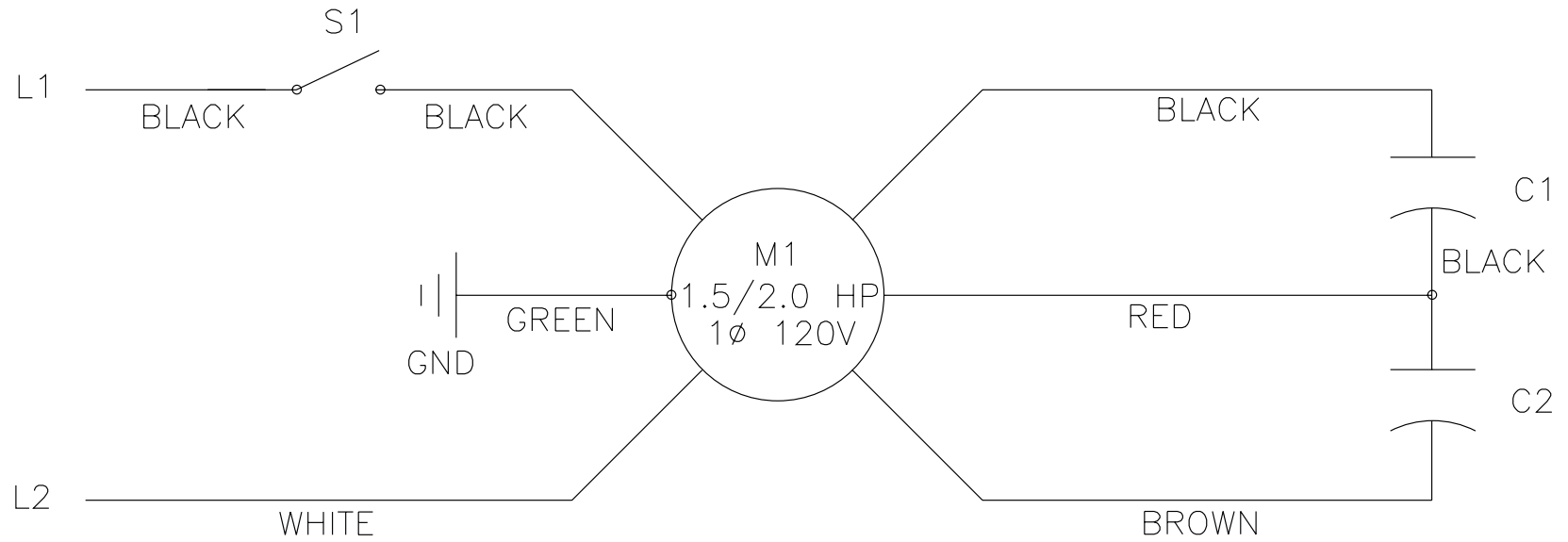


851-266-101499-RD

<b>OPTIONAL CART ASSEMBLY (AW-7005-02WK)</b>			
<b>REF. #</b>	<b>DESCRIPTION</b>	<b>PART #</b>	<b>QTY.</b>
1	Handle	7-0132	1
2	Drive Screw	43-0048	8
3	Adjustable Upper Joint	33-0242	2
4	Adjustable Lower Joint	33-0241	2
5	Bolt	27-0020	2
6	Frame	5-0118	2
7	Washer	28-0006	2
8	Wheel	14-0052	2
9	Hub Cap	33-0055	2
10	Locknut	30-0154	2
11	Locknut	30-0155	2
12	Knob	7-0115	2
13	Isolator	14-0063	2
14	Washer	28-0021	2
15	Screw	27-3096	2

# WIRING SCHEMATIC

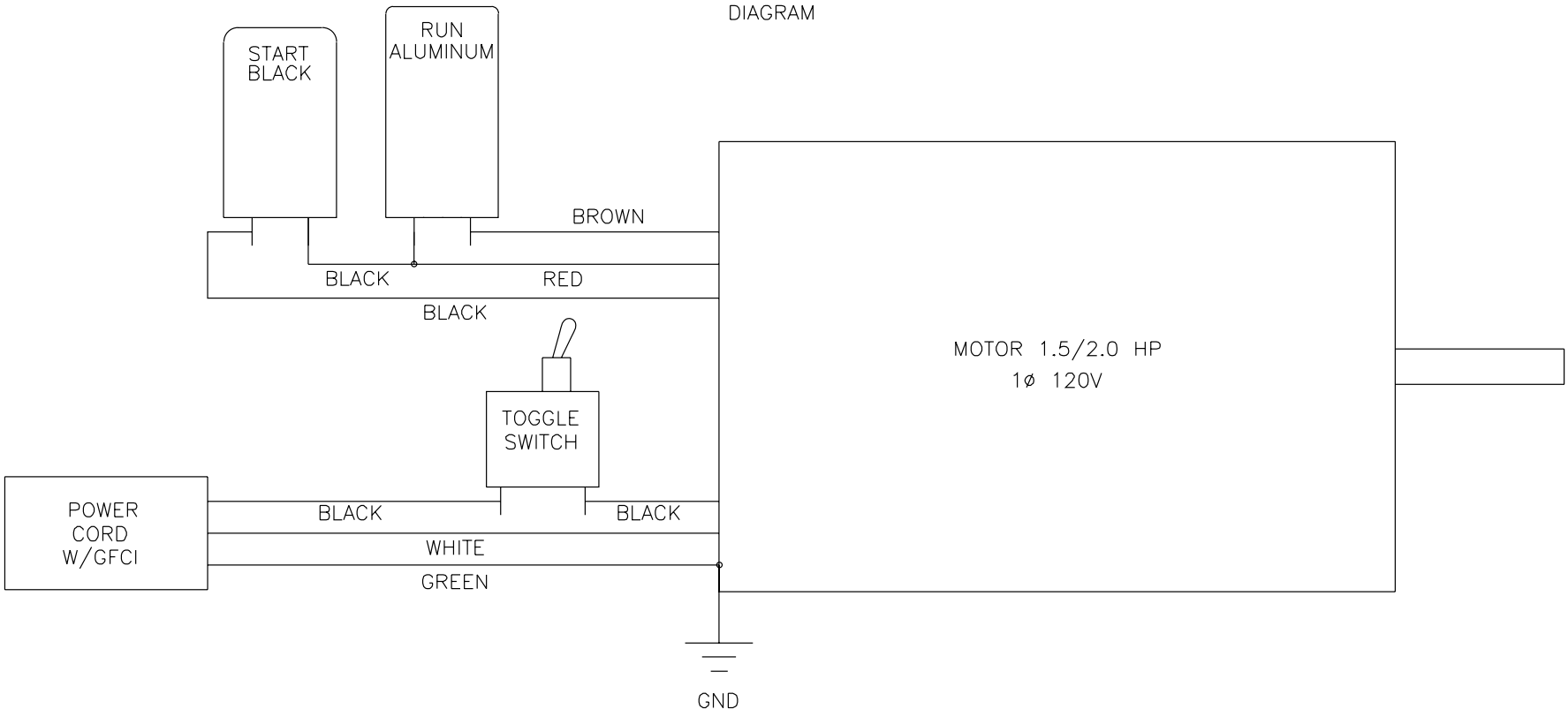
SCHEMATIC



OMCWU189S -061295-DCE



# WIRING DIAGRAM



OMCWU189D-061295-DCE

