

Challenging applications call for serious equipment. These self-contained, portable gas washers are meant for service centers, automotive shops and other tough cleaning applications.



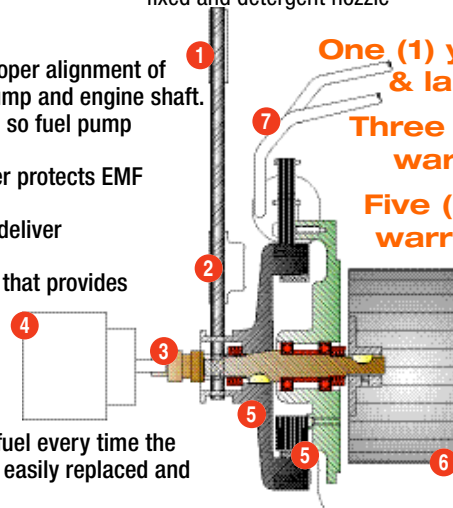
HSP-3004-3MGV

Additional Features

- Performance-proven OHV engine with low oil protection and recoil start
- Direct drive triplex ceramic piston AR pump with forged brass manifold
- Thermal relief valve
- Stainless-steel and brass unloader valve
- Low pressure detergent injection
- Complete system diagnostic board
- Pressure and high limit safety controls
- No. 1 or No. 2 diesel or kerosene fired burner
- Polyethylene burner fuel tank
- Temperature rise 150°F/66°C above ambient, maximum 200°F
- Wand holder
- Locking tire brake
- Solid steel threaded axles
- Pneumatic tires with tubes (4)
- 3/8 inch x 50 foot steel wire-braided pressure hose with screw connects, swivel and bend restrictors
- Professional-grade insulated trigger gun with safety lock-off
- Adjustable pressure-insulated dual lance with 15-degree fixed and detergent nozzle

Patented EMF System

1. Engine sheave, dual set screw mount, maintains proper alignment of pump shaft key preventing unnecessary wear of pump and engine shaft.
2. The belt tension sheave creates proper belt tension so fuel pump discharges fuel upon demand.
3. The long lasting, non-corrosive flexible drive coupler protects EMF system if fuel pump locks up.
4. Fuel pump is a durable high quality pump that will deliver No. 1 or No. 2 diesel fuel or kerosene.
5. Stator coil/magnets are a low maintenance system that provides solenoid control voltage.
6. Fan provides burner air for proper combustion and clean exhaust smoke. It has an easily accessible air flow control.
7. Ignition coil provides voltage to electrodes for proper spark voltage, allowing accurate ignition of fuel every time the trigger is pulled. The ignition coil has a long life, is easily replaced and has a proven track record in the industry.



One (1) year limited parts & labor warranty

Three (3) year limited warranty on coil

Five (5) year limited warranty on pump

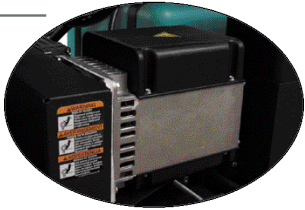
HS Series

Gasoline/Diesel - Belt Drive

High quality fuel filter/ water separator ensures clean fuel supply



2500 watt generator



Polyethylene burner and engine fuel tanks



Performance-proven industrial gasoline or diesel engine with electric start (battery included)



Heavy-duty powder coated steel square tube frame



HS-3005-OMGV

MI-T-M Corporation • 800-553-9053 • E-mail: corp@mitm.com • Website: www.mitm.com

Model No	HS-3005-OMGV ^	HS-3006-OMGD *^	HS-3504-OMGV ^	HS-3505-OMGH ^	HS-3505-OMGV ^	HS-3506-OMGH ^
Pressure (psi)	3000	3000	3500	3500	3500	3500
Flow (gpm)	4.8	5.7	3.8	4.7	4.7	5.6
Engine	Vanguard OHV	Deutz/Ruggerini	Vanguard OHV	Honda OHV	Vanguard OHV	Honda OHV
Horsepower	16.0	19.0	16.0	20.0	21.0	24.0
Dim. (LxWxH)	50in.x34in.x45in.	50in.x34in.x45in.	50in.x34in.x45in.	50in.x34in.x45in.	50in.x34in.x45in.	50in.x34in.x45in
Shipping weight	854 lbs.	854 lbs.	854 lbs.	854 lbs.	854 lbs.	854 lbs.
Net weight	750 lbs.	750 lbs.	750 lbs.	750 lbs.	750 lbs.	750 lbs.

*Diesel unit.

^Models equipped with General pumps, all other models equipped with AR pumps.

Model No	HS-4004-OMAH	HS-4004-OMAV
Pressure (psi)	4000	4000
Flow (gpm)	4.0	4.0
Engine	Honda OHV	Vanguard OHV
Horsepower	20.0	21.0
Dim. (LxWxH)	50in.x34in.x45in.	50in.x34in.x45in.
Shipping weight	854 lbs.	854 lbs.
Net weight	750 lbs.	750 lbs.

Options Chart:

Model #	HX-0130	HX-0131	HX-0132	HX-0133	HX-0134	HX-0135	HX-0136	HX-0137
HS-3005	●	●		●				
HS-3006	●	●					●	
HS-3504	●	●	●					●
HS-3505	●	●			●			
HS-3506	●	●				●		
HS-4004	●							

Model #	HX-0138	HX-0139	HX-0140	HX-0141	HX-0142	HX-0143	HX-0144	HX-0145	HX-0146	HX-0147	HX-0148	AW-5740-0000
HS-3005	●					●		●	●	●	●	
HS-3006				●			●	●	●	●	●	●
HS-3504						●		●	●	●	●	●
HS-3505		●				●		●	●	●	●	●
HS-3506			●			●	●	●	●	●	●	●
HS-4004					●			●	●	●		●



The number one choice for cleaning contractors offers quality components built for years of industrial use. If portability is an issue, consider trailer mounting a unit.



HS-3506-0MGH

HS Series is also available with optional wheel kit.

HS-4004-0MAV shown with optional trailer unit and 450 gallon tank (AW-9000-0002) and hose reels (50-0137), all sold separately



Additional Features

- Belt drive triplex piston General or AR pump with ceramic plungers and forged brass manifold
- 80-mesh, high-volume, stainless-steel screen inlet water strainer
- Pressure relief valve protects against excessive system pressure
- Factory preset unloader (3000 PSI - 4000 PSI)
- 1/2 inch schedule 80 coil with stainless-steel wrap heat exchanger
- Heavy-duty duel cogged belt drive system
- 10.0 gallon fuel tank capacity
- 10.0 gallon burner tank capacity with 3.37 gph burner fuel consumption (2.76 gph on HS-3504-0MGV only)
- No. 1 or No. 2 diesel or kerosene fired burner

- Temperature rise 150°F/66°C above ambient, maximum 200°F
- Quick connect nozzles (0°, 15°, 25° and 40°)
- 3/8 inch x 50 foot steel wire-braided pressure hose with quick connects, swivel and bend restrictors
- Professional-grade insulated trigger gun with safety lock-off
- Adjustable pressure insulated dual lance with fixed detergent nozzle

Two (2) year limited parts & labor warranty

Three (3) year limited warranty on coil

Five (5) year limited warranty on pump

Options:

- HX-0130** Three way ball valve - Allows pressure washer to be operated from garden hose/float tank or trailer supply tank by adjusting ball valve lever
- HX-0131** High pressure detergent injector (K7) - Supplies soap injection through the high pressure pump while spraying; pressure washers with K7 flow actuated unloaders only
- HX-0132 - HX-0136** Steam combination 250°F (K7) - Increases outlet temperature to 250°F while lowering system pressure. When trigger gun is released no pressure is trapped in the outlet hose. Steam option for models with K7 unloaders.
- HX-0137 - HX-0142** Steam combination 250°F - Increases outlet temperature to 250°F while lowering system pressure
- HX-0143** Trapping unloader - High pressure water is trapped in outlet hose when trigger gun is released
- HX-0144** Dual gun - Two guns may be sprayed at the same time; flow is divided between the two guns while each operator maintains equal system pressure
- HX-0145** Adjustable temperature control - Operator is able to adjust outlet water temperature between 96-198°F
- HX-0146** Hour meter - Displays number of hours unit has been in operation
- HX-0147** Four (4) point lifting capability - Allows unit to be lifted by fork truck
- HX-0148** Detergent (trapping loader) - Supplies soap injection through the high pressure pump while spraying; pressure washers with pressure trapping unloader only
- AW-5740-0000** Wheel kit -Allows unit to become portable

Note: To order options HX-0137 - HX-0141, HX-0144, or HX-0148, you must also order option HX-0143.

HG Series

Natural Gas - Belt Drive

**Belt drive
triplex
ceramic
plunger
General
pump**



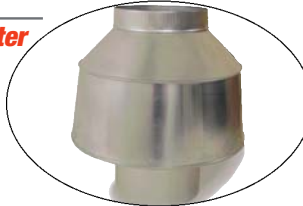
**Adjustable
high
pressure
detergent
injection**



**Electronic
ignition
with
standing
pilot light**



**Draft diverter
included**



HG-1805-1230

MI-T-M Corporation • 800-553-9053 • E-mail: corp@mitm.com • Website: www.mitm.com

Model No	HG-1805-1208	HG-1805-3208	HG-1805-1230	HG-1805-3230	HG-1805-3460
Pressure (psi)	1800	1800	1800	1800	1800
Flow (gpm)	4.7	4.7	4.7	4.7	4.7
Motor	208V, 1Ø, 28.2A	208V, 3Ø, 18.5A	230V, 1Ø, 25.5A	230V, 3Ø, 16.0A	460V, 3Ø, 8.0A
Horsepower	6.0	6.0	6.0	6.0	6.0
Dim. (LxWxH)	56.5in.x29in.x49.75in.	56.5in.x29in.x49.75in.	56.5in.x29in.x49.75in.	56.5in.x29in.x49.75in.	56.5in.x29in.x49.75in.
Shipping weight	784 lbs.	784 lbs.	784 lbs.	784 lbs.	784 lbs.
Net weight	664 lbs.	664 lbs.	664 lbs.	664 lbs.	664 lbs.

Model No	HG-2004-1208	HG-2004-3208	HG-2004-1230	HG-2004-3230	HG-2004-3460
Pressure (psi)	2000	2000	2000	2000	2000
Flow (gpm)	4.2	4.2	4.2	4.2	4.2
Motor	208V, 1Ø, 28.2A	208V, 3Ø, 18.5A	230V, 1Ø, 25.5A	230V, 3Ø, 16.0A	460V, 3Ø, 8.0A
Horsepower	6.0	6.0	6.0	6.0	6.0
Dim. (LxWxH)	56.5in.x29in.x49.75in.	56.5in.x29in.x49.75in.	56.5in.x29in.x49.75in.	56.5in.x29in.x49.75in.	56.5in.x29in.x49.75in.
Shipping weight	784 lbs.	784 lbs.	784 lbs.	784 lbs.	784 lbs.
Net weight	664 lbs.	664 lbs.	664 lbs.	664 lbs.	664 lbs.

Model No	HG-3004-1208	HG-3004-3208	HG-3004-1230	HG-3004-3230	HG-3004-3460
Pressure (psi)	3000	3000	3000	3000	3000
Flow (gpm)	3.5	3.5	3.5	3.5	3.5
Motor	208V, 1Ø, 40.5A	208V, 3Ø, 23.0A	230V, 1Ø, 37.0A	230V, 3Ø, 20.0A	460V, 3Ø, 10.0A
Horsepower	8.0	8.0	8.0	8.0	8.0
Dim. (LxWxH)	56.5in.x29in.x49.75in.	56.5in.x29in.x49.75in.	56.5in.x29in.x49.75in.	56.5in.x29in.x49.75in.	56.5in.x29in.x49.75in.
Shipping weight	813 lbs.	813 lbs.	813 lbs.	813 lbs.	813 lbs.
Net weight	693 lbs.	693 lbs.	693 lbs.	693 lbs.	693 lbs.



Use this reliable, stationary natural gas or LP pressure washer in service centers or body shops.



Natural Gas Installations Recommendation:
Mi-T-M's natural gas pressure washer must have a clearance of 1 foot on all sides of the unit and 4 feet above the unit

Two (2) year limited parts & labor warranty

Three (3) year limited warranty on coil

Five (5) year limited warranty on pump

Gas Supply Line	
Natural Gas	
7-8" water column input	
LP Gas	
12-14" water column input	
Recommended Pipe Sizes for Gas Supply Line	
Natural Gas	
Distance to Unit from Regulator	Pipe Size
0-50 feet	1½" 1PS
50-100 feet	2" 1PS
100-200 feet	2½" 1PS
LP Gas	
Distance to Unit from Regulator	Pipe Size
0-50 feet	1" 1PS
50-100 feet	1½" 1PS
100-200 feet	1¾" 1PS

Additional Features

- Open drip-proof electric motor with thermal overload protection
- Natural gas or LP gas-fired (vapor only) natural draft with aspirating-type burner, 10 inch stack
- Factory preset trapping unloader
- Thermal relief valve
- Pressure switch and overpressure safety controls
- 24 volt control system
- Polyethylene float tank (4 gallon with in-line screen filter)
- 1/2 schedule 80 coil with 7 pancake heat exchanger
- Adjustable thermostat
- Temperature rise 150°F/66°C above ambient, maximum 200°F (250°F/121°C outlet temperature with steam option)
- 338,000 BTU per hour - Natural gas
- 326,000 BTU per hour - LP gas (vapor only)
- Quick connect nozzles (0°, 15°, 25° and 40°)
- 3/8 inch x 50 foot steel wire-braided pressure hose with screw connects, swivel and bend restrictors
- Professional-grade insulated trigger gun with safety lock-off
- Adjustable pressure insulated dual lance with 15-degree fixed and detergent nozzles

Options:

- HX-0104 K7 unloader** - Converts pressure trapping unloader system to flow actuated K7 unloader. Pressure is not trapped in the discharge line when trigger is released.
- HX-0105 Liquid propane** - Converts natural gas pressure washer to operate on liquid propane (vapor only)
- HX-0106 Hour meter** - Displays number of hours unit has been in operation
- HX-0107 Time delay shutdown** - Timer will shut unit off automatically when trigger gun is released and timer reaches setting
- HX-0108 (1) Remote station (auto start/stop N/A)** - Adds control box which may be mounted away from unit to control on/off, burner and soap injection
- HX-0109 Time delay shutdown and first remote box (kit option)** - Timer will shut unit off automatically when trigger gun is released and timer reaches setting; Adds control box which may be mounted away from unit to control on/off, burner and soap injection
- HX-0110 Additional remotes (up to 3)** - Additional remotes that may be added to unit after the 1st remote is installed
- HX-0111 Auto start/stop** - When trigger gun is released timer will turn unit off, when trigger gun is pulled unit will restart
- HX-0112 K7 unloader (flow activated) (auto start/stop N/A)** - Converts pressure trapping unloader system to flow actuated K7 unloader. Pressure is not trapped in the discharge line when trigger is released.
- HX-0113 Dual gun control** - Two guns may be operated at the same time. Flow is divided between the two guns while each operator maintains equal system pressure.
- HX-0118 Painted and stainless-steel box kit option** - Converts side panels to stainless-steel material
- HX-0119 - HX-0121 250°F steam upgrade** - Increases outlet temperature to 250°F while lowering system pressure
- HX-0124 Auto start/stop and first remote option** - When trigger gun is released timer will turn unit off, when trigger gun is pulled unit will restart; Adds control box which may be mounted away from unit to control on/off, burner and soap injection

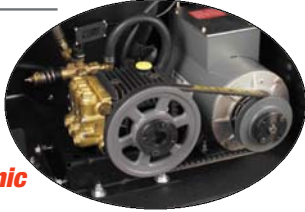
Model #	HX-0104	HX-0105	HX-0106	HX-0107	HX-0108	HX-0109	HX-0110	HX-0111	HX-0112	HX-0113	HX-0118	HX-0119	HX-0120	HX-0121	HX-0124
HG-1805		●	●	●	●	●	●	●	●	●	●	●			●
HG-2004		●	●	●	●	●	●	●	●	●	●	●	●		●
HG-3004	●	●	●	●	●	●	●	●	●	●	●	●		●	●

HLP Series

Electric - Belt Drive

These units are great for those jobs that require hot water and high pressure, such as degreasing, sanitizing and grime removal.

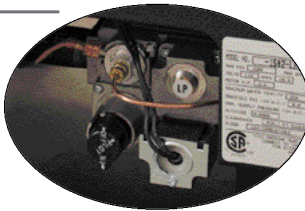
Belt drive triplex crankshaft General pump with solid ceramic pistons



Tank carrier with snug-fit band for 30 lb. propane tanks (tanks sold separately, minimum size is 30 lbs.)



LP-gas shut-off valve



HLP-1502-0M10
(tank shown is sold separately)



Manual spark ignition



HLP-0703-0M10

Additional Features

- Open-drip proof electric motor
- LP-gas fired natural draft with aspirating type burner (vapor only)
- 35 foot electrical cord with ground fault circuit interrupter (GFCI) (20 amp plug on 1500 PSI model)
- Thermal relief valve helps prevent pump damage
- Downstream low pressure chemical injector
- Water output temperature is approximately 190°F to 200°F (1500 PSI model only)
- Water output temperature for "wet" steam is approximately 250°F (700 PSI model only)
- Operates at 350 PSI in "wet" steam mode (700 PSI model only)
- High limit temperature control for added safety
- 200,000 BTU per hour - LP-gas (vapor only)
- Gas regulator
- 10 foot LP-gas hose
- Reinforced powder coated cabinet-style steel frame
- Wand holder
- Solid steel threaded axles
- Pneumatic tires with tubes (4)
- Quick connects (0°, 15°, 25°, 40° and detergent)
- 3/8 inch x 50 foot steel wire-braided pressure hose with quick connects, swivel and bend restrictors
- Professional-grade insulated trigger gun with safety lock-off
- 36 inch insulated lance

Model No	HLP-0703-0M10*	HLP-1502-0M10
Pressure (psi)	700	1500
Flow (gpm)	2.3	1.8
Motor	120V, 1Ø, 15.0A	120V, 1Ø, 20.0A
Horsepower	1.5	2.0
Dim. (LxWxH)	57.5in.x35.5in.x59.5in.	57.5in.x35.5in.x59.5in.
Shipping weight	368 lbs.	368 lbs.
Net weight	245 lbs.	245 lbs.

*Combination Wet Steam Cleaner/Pressure Washer

Two (2) year limited parts & labor warranty

Three (3) year limited warranty on coil

Five (5) year limited warranty on pump

Natural Gas Heater Module

HGM Series

This state-of-the-art natural gas heater module that is the simplest way to add heat to your existing cold water pressure washers.

Natural gas or LP-gas fired natural draft with aspirating-type burner, 10 inch stack

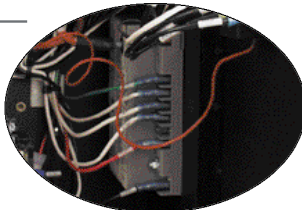


Natural Gas Installations Recommendation:
Mi-T-M's natural gas heater module must have a clearance of 2 feet on both sides and at the front of the unit

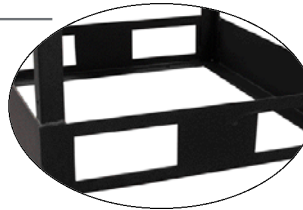
HGM-3506-0E10 shown with JP-2703-0MHB



Electronic ignition with pilot



Fork truck accessible



On/off burner switch



Draft diverter included



One (1) year limited parts & labor warranty

Additional Features

- Incoming power 120 volt or 240 volt, single phase
- Pressure relief valve
- Adjustable thermostat
- 24 volt control system
- 1/2 inch schedule 80 vertical coil assembly with 7 pancake
- Quality gas valve with regulator (max. input 1/2 PSI)
- Inlet and outlet quick connects
- Powder coated frame assembly
- 3/8 inch x 12 foot jumper hose with quick connects included (to hook up to existing pressure washer)

Model No	HGM-3506-0E10
Max. PSI	3500
Max. GPM	6.0
Nat. Gas BTU	338,000 per hr.
LP-Gas BTU	326,000 per hr.
Dim. (LxWxH)	24.25in.x26.25in.x49.75in.
Shipping weight	466 lbs.
Net weight	346 lbs.

Options:

HX-0105

Liquid propane - Converts natural gas heater module to operate on liquid propane (vapor only)

HX-0129

460V, 3 phase incoming power option - For when you have 460 volts of power available

Gas Supply Line

Natural Gas

7-8" water column input

LP-Gas

12-14" water column input

Recommended Pipe Sizes for Gas Supply Line

Natural Gas

Distance to Unit from Regulator	Pipe Size
0-50 feet	1½" 1PS
50-100 feet	2" 1PS
100-200 feet	2½" 1PS

LP-Gas

Distance to Unit from Regulator	Pipe Size
0-50 feet	1" 1PS
50-100 feet	1½" 1PS
100-200 feet	1¾" 1PS

Model #	HX-0105	HX-0129
HGM-3506-0E10	●	●

Mi-T-M Corporation • 800-553-9053 • E-mail: corp@mtn.com • Website: www.mtn.com

Pressure Washers

Air Compressors

Wet/Dry Vacuums

Jobsite Toolboxes

Metal Cutting Saw

Pressure Washer Accessories

A.



*Units sold separately

A. Product Display Rack

Compact display rack solves your limited show floor space issues.

AW-9300-0013

- Easy to assemble - no tools required
 - Requires only 15 square foot of floor space
 - Constructed of powder coated metal square tubing
 - Dim.: 62 in. H x 60 in. W x 36 in. D
- Includes:
- Two shelves, header card and 3-ring product display shelf

B. Pressure Washer Replacement Parts Rack

Customized to meet your customers needs.

AW-9300-0001

- Increase profit margins
- Laser cut logo
- Powder coated frame
- Dim.: 73 in. H x 29.5 in. W x 24.5 in. D

C. Rental Rack

Designate floor space for your rental equipment and accessories.

AW-9300-0009

- Dim.: 67 in. H x 29.5 in. W x 21 in. D
- Includes:
- Rack
 - Rental signage
 - Clipboard organizer

B.



*Parts sold separately

- Suggested rental inventory
- Rental procedures form
- Machine instruction decals
- Mi-T-M literature

D. Pump Oil

Mi-T-M's pump oil offers trouble-free performance with no lubricant related failures. Our pump oil is specially designed for pressure washer pumps. It will keep pumps cooler than regular oil and is suitable for all climates.

AW-4085-0016 (1 pint - 6 or 12 per case)

- Convenient pour spout and resealable cap
- Contains rust and corrosion additives, anti-wear additives, foam suppressant and dispersant for system cleanliness

E. Detergents All Purpose Cleaner

The most versatile and efficient all-around cleaner. Use all purpose cleaner on vehicles, glass, stainless-steel, aluminum, painted surfaces and lawn equipment.

AW-4018-0025 (1 pint) 6 per case

AW-4018-0026 (1 gallon) 4 per case

AW-4018-0005 (5 gallons)

AW-4018-0055 (55 gallons)

- Environmentally friendly, will not harm plants, biodegradable
- Hard water stable prevents spotting
- Indoor and outdoor use

C.



*Unit and parts sold separately

D.



E.



F.

For use on:

- Rust
- Paint
- Stains
- Graffiti



Heavy-Duty Degreaser

Heavy-duty degreaser is great for the removal of oil and grease. It is capable of handling all your equipment and automotive cleaning needs.

AW-4059-0025 (1 pint) 6 per case

AW-4059-0026 (1 gallon) 4 per case

AW-4059-0005 (5 gallons)

AW-4059-0055 (55 gallons)

- Contains rust inhibitors to reduce corrosion
- Hard water stable prevents spotting

Deck & House Wash

Deck & house wash removes mildew and dirt. It is recommended for decks, homes and wooden surfaces.

AW-4034-0025 (1 pint) 6 per case

AW-4034-0026 (1 gallon) 4 per case

AW-4034-0005 (5 gallons)

AW-4034-0055 (55 gallons)

- Environmentally friendly, will not harm plants, biodegradable
- Hard water stable prevents spotting

F. Sand Injector

Wet sandblasting is efficient and dust-free. Remove coatings from steel and concrete surfaces.

AW-3000-0000 (Carbide tip)

AW-3020-0000 (Ceramic tip)

- Includes sand probe and clear hose

- Consult factory before ordering

Our accessory packages let you custom-design your Mi-T-M pressure washer for maximum satisfaction. Our customer service representatives can help you decide which accessory is best for you.



A.
For use on:
Cars
Boats
Vans
Engines



B.
For use on:
Farm equipment
Tractor trailers
RV's
Bridges



C.
When your unit needs a little protection on the job site

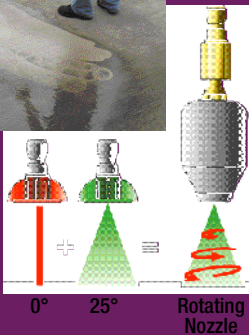


D.



E.

For use on:
Sidewalks
Driveways
Track vehicles
Muddy areas
Old peeling paints
Concrete surfaces



For use on:
Decks
Patios
Sidewalks
Driveways
Pool decks
Parking lots
Any horizontal surface



F.
For use on:
Fiberglass
Wood
Brick
Painted surfaces

A. Low Pressure Detergent Injection

The low pressure detergent injector allows you to apply recommended detergents.

- AW-8400-0021** (2000-4000 PSI)
- AW-8000-0001** (5000 PSI)

- Adjustable chemical draw
- Clear, pliable detergent nozzle
- Solid brass body with stainless-steel orifice for durability
- Quick connects for easy installation

B. High Pressure Detergent Injection

With the high pressure detergent injector, large tasks become small. High pressure water mixes with detergent to clean even the heaviest build-up.

- 50-0161**
- AW-8007-0000** (Diaphragm-style)

- Brass and stainless-steel construction
- Adjustable metering valve
- Steel mesh in-line water strainer
- 6.0 GPM maximum operating capacity

C. Roll Cage

Designed to protect cold water pressure.

- CX-0053** (9.0 HP Gas)
- CX-0054** (11.0-13.0 HP Gas)
- CX-0055** (16.0 HP Gas)
- CX-0056** (9.0 HP Yanmar)

- Lifting hook
- 1½ inch powder coated steel tubing
- Retro-fits to existing frame

C. Rotary Surface Cleaners

Clean large surfaces faster and easier with our rotary surface cleaners than with a standard cleaning nozzle. Rotary surface cleaners are equipped with a strong bristle brush for long life and easy glide action.

- AW-7020-8000**

- 18 inch diameter
- 4000 PSI rated
- Heavy-duty, lightweight aluminum portable handle
- Heat treated pressure swivel
- Professional-grade high pressure trigger gun
- 212°F maximum temperature
- 3.0 GPM - 10.0 GPM water volume
- 2500 maximum RPM

- AW-7020-8001**

- 28 inch diameter
- 4000 PSI rated
- Large wheels for mobility
- Lightweight, portable frame with walk behind design
- Professional-grade aluminum housing
- 212°F maximum temperature
- 3.0 GPM - 10.0 GPM water volume
- 2500 maximum RPM

E. Rotating Nozzles

Rotating nozzles increase your cleaning power and decrease your cleaning time. They offer 0° spray impact with 25° coverage. Nozzles include filter with quick connect and offers heavy-duty components for long life and reliability.

- AW-7004-Series***

- 5000 PSI maximum rating
- AW-7300-Series***
- 3000 PSI maximum rating
- AW-7500-Series***
- 5000 PSI maximum rating

***Consult factory for correct orifice size**

F. Rotating Brush

The rotating brush offers low pressure rotation for hard to remove debris on sensitive surfaces.

- AW-7003-1500**

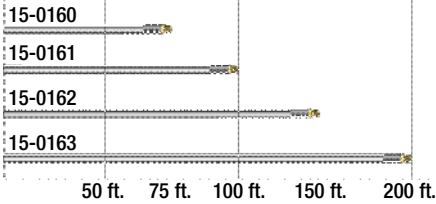
- Natural hair bristles
- Quick connect
- Adjustable angle
- 3.5 GPM flow rate
- Can be used with low pressure detergent injector

Pressure Washer Accessories

A. For when you need extra mobility and length.



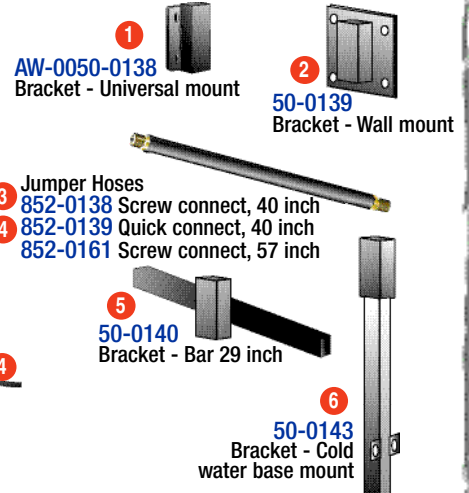
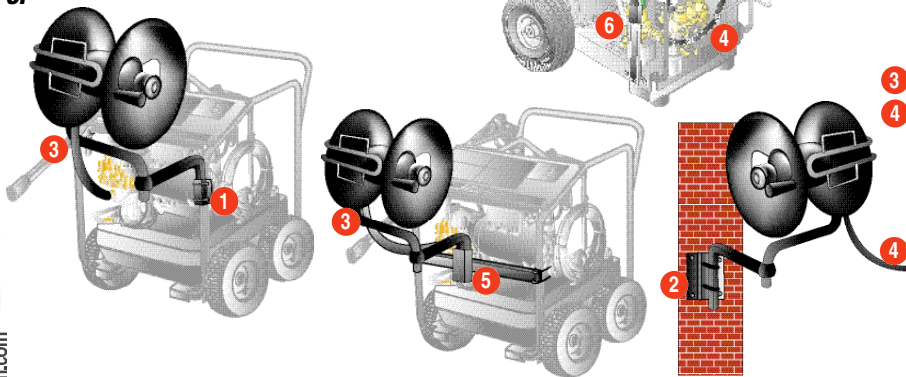
851-0006, 851-0007, 851-0317, 15-0006, 15-0077, 850-0174, 850-0199, 15-0146



B. For use on:
Siding
House eaves
Farm equipment
Semi-tractor trailers
Multi-story buildings



C.



A. Extension Hoses

When you need extra mobility and length.

Cold Water

- 851-0006** (4000 PSI)
- 851-0007** (3000 PSI)
- 851-0317** (5000 PSI)

- 50 foot x 3/8 inch I.D.
- Non-marking
- High pressure hoses include quick connects, swivel and bend restrictors
- Chemical resistant
- Wire-braided

- 15-0006** (Industrial water supply)
- 50 foot x 3/4 inch

Hot Water

- 15-0077** (Steam combination)
- 850-0174** (2500 PSI & HSP models)
- 850-0199** (4000 PSI & HSP models)
- 50 foot x 3/8 inch I.D.
- Includes bend restrictors, swivel and screw connects

- 15-0146** (3000 PSI, 50 foot x 3/8 inch)
- 15-0160** (4000 PSI, 75 foot x 3/8 inch)
- 15-0161** (4000 PSI, 100 foot x 3/8 inch)
- 15-0162** (4000 PSI, 150 foot x 3/8 inch)
- 15-0163** (3000 PSI, 200 foot x 3/8 inch)

- 3/8 inch male swivel
- For use with hose reels

B. Extended Reach Wands

Clean hard to reach places by using extended reach wands.

- AW-7015-1200** (12 foot)
- AW-7015-1800** (18 foot)
- AW-7015-2400** (24 foot)

- Fiberglass housing
- Professional-grade trigger gun with safety lock-off
- Complete with quick connects
- Extends from 6 feet to 12, 18 or 24 feet
- Lightweight and easy to control
- Compatible with all makes of pressure washers rated up to 3500 PSI
- Easy hose retraction

AW-7016-1200 (12 foot)

AW-7016-1800 (18 foot)

- Heavy-duty aluminum housing
- Quick Pin-Lock adjustment collar
- Large heavy wall tubing for added strength
- Extends from 6 feet to 12 or 18 feet
- Large diameter handle
- Universal gun mount
- Compatible with all makes of pressure washers rated up to 4000 PSI

C. Hose Reels

Hose reels are convenient for the storage of hoses.

- 50-0136** (13 inch reel - 100 foot maximum hose length)
- 50-0137** (16 inch reel - 200 foot maximum hose length)

- Frame mount
- 360° pivoting action
- Easy mount bracket design
- Clean hands hose guide
- Live system

Replacement Parts Kit

Everything you need to keep your pressure washer up and running.

Pressure Washers

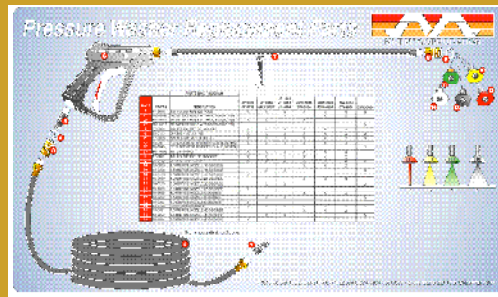
Air Compressors

Wet/Dry Vacuums

Jobsite Toolboxes

Metal Cutting Saw

A.



Includes a parts chart that fits into the plastic lid with a numbered diagram to help identify parts and an application chart for easy part recognition and unit capability.



A. Replacement Parts Kit

The perfect pressure washer replacement parts kit.

See chart for part numbers needed to order the kit

- Secure case locking system to keep lid attached and parts secure
- Diagram card includes Mi-T-M part numbers for quick reorder reference
- Lid hinges to reveal kit components and location
- Storage compartments with adjustable plastic separators, keeps all parts organized for easy access
- Durable plastic case is made of heavy plastic

Kit Includes:

Part #	Description	Included Quantity
17-0001	1/4" F x 1/4" Socket	2
17-0002	1/4" M x 1/4" Plug	2
17-0004	3/8" F x 3/8" Socket	2
17-0005	3/8" M x 3/8" Plug	2
17-0006	3/8" F x 3/8" Plug	2
17-0007	3/8" M x 3/8" Socket	2
17-0028	1/4" M x 1/4" Socket	2
17-0029	1/2" M x 3/8" Socket	2
18-0028	4.0 Orifice - 0° (Red)	2
18-0029	4.0 Orifice - 15° (Yellow)	2
18-0030	4.0 Orifice - 25° (Green)	2
18-0031	4.0 Orifice - 40° (White)	2
18-0257	3.5 Orifice - 0° (Red)	2
18-0258	3.5 Orifice - 15° (Yellow)	2
18-0259	3.5 Orifice - 25° (Green)	2
18-0260	3.5 Orifice - 40° (White)	2
18-0302	3.0 Orifice - 0° (Red)	2
18-0150	3.0 Orifice - 15° (Yellow)	2
18-0303	3.0 Orifice - 25° (Green)	2
18-0304	3.0 Orifice - 40° (White)	2
18-0148	65° Chemical Injector Nozzle	2
19-0050	Chemical Injector Strainer	2
25-0122	O-ring Seal (Tips)	10
25-0123	O-ring Seal (3/8" Quick connect)	10
62-0174	Replacement Parts Box	1

Mi-T-M Corporation • 800-553-9053 • E-mail: corp@mfm.com • Website: www.mfm.com